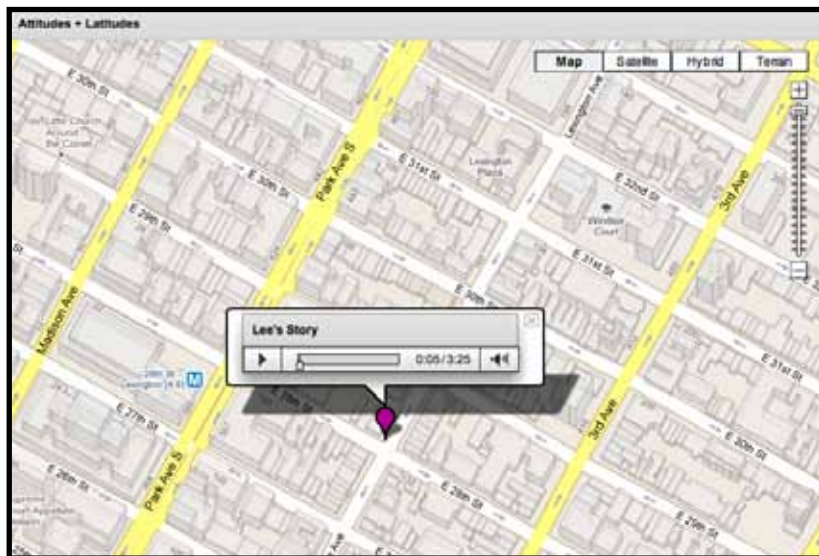


ATTITUDES TOWARD THE LGBTQI
COMMUNITY AS INTERACTIVE MAP
OF AUDIO RECORDINGS



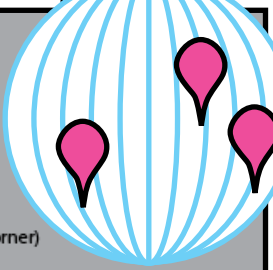
Atts & Lats

ATTITUDES AND LATITUDES



▶ RECORD YOUR STORY

SAMPLE QUESTIONS



Your first name.
Where do you live now? (Get street corner)

How would you define your sexuality?

What do you think is the general attitude toward gays and lesbians where you live now?

Are there any particular places that you have lived which were more or less gay friendly? Where?

When and where did you first meet someone you identified as gay? Did the location effect the situation?

Did your attitude about homosexuality change based on a location that you lived or visited?

Can you think of any location-based experiences about gays and lesbians that you've had that you'd like to share?

▶ WATCH HOW-TO VIDEO :01:30

We are exploring exposure to place, because we want to find out how location affects peoples perceptions and attitudes towards the LGBTQI community, in order to help our audience experience interactive mapped audio recordings.
OPEN SOURCE / OPEN ACCESS. CROWD-SOURCED BY NATHAN BECKER & LEIF PERCIFELD

📍 TAG STORY LOCATIONS

⦿ TAG STORY TIME FRAME



Atts&Lats

